

An in-depth investigation of 11 pulsars discovered by FAST

A. D. Cameron^{1b},^{1,2}★ D. Li^{1b},^{1,3}★ G. Hobbs^{1b},^{1,2} L. Zhang,^{1,2,3} C. C. Miao,^{1,3}
 J. B. Wang,^{4,5,6} M. Yuan,^{1,3} S. Wang,^{1,3} G. Jacobs Corban,^{2,7} M. Cruces,⁸ S. Dai,^{1,2}
 Y. Feng,^{1,2,3} J. Han,^{1,3} J. F. Kaczmarek,^{2,9} J. R. Niu,^{1,3} Z. C. Pan,¹ L. Qian,¹
 Z. Z. Tao,^{1,10,11} P. Wang,¹ S. Q. Wang,^{2,3,4} H. Xu,^{1,3} R. X. Xu,^{12,13} Y. L. Yue,¹
 S. B. Zhang,^{2,3,14,15} Q. J. Zhi,^{10,11} W. W. Zhu,¹ D. J. Champion^{1b},⁸ M. Kramer,^{8,16}
 S. Q. Zhou,^{1,3} K. P. Qiu¹⁷ and M. Zhu¹

¹National Astronomical Observatories, Chinese Academy of Sciences, 20A Datun Road, Chaoyang District, Beijing 100101, China

²CSIRO Astronomy and Space Science, P.O. Box 76, Epping, NSW 1710, Australia

³University of Chinese Academy of Sciences, Beijing 100049, China

⁴Xinjiang Astronomical Observatory, 150, Science-1 Street, Urumqi, 830011 Xinjiang, China

⁵Key Laboratory of Radio Astronomy, Chinese Academy of Sciences, 150 Science 1-Street, Urumqi, 830011 Xinjiang, China

⁶Xinjiang Key Laboratory of Radio Astrophysics, 150 Science 1-Street, Urumqi, 830011 Xinjiang, China

⁷Victoria University of Wellington, P.O. Box 600, Wellington 6140, New Zealand

⁸Max-Planck Institut für Radioastronomie, Auf dem Hügel 69, D-53121 Bonn, Germany

⁹National Research Council Canada, Herzberg Research Centre for Astronomy and Astrophysics, Dominion Radio Astrophysical Observatory, P.O. Box 248, Penticton, BC V2A 6J9, Canada

¹⁰Guizhou Provincial Key Laboratory of Radio Astronomy and Data Processing, Guizhou Normal University, Guiyang 550001, China

¹¹School of Physics and Electronic Science, Guizhou Normal University, Guiyang 550001, China

¹²Kavli Institute for Astronomy and Astrophysics, Peking University, Beijing 100871, China

¹³Department of Astronomy, School of Physics, Peking University, Beijing 100871, China

¹⁴Purple Mountain Observatory, Chinese Academy of Sciences, Nanjing 210008, China

¹⁵International Centre for Radio Astronomy Research, University of Western Australia, Crawley, WA 6009, Australia

¹⁶Jodrell Bank Center for Astrophysics, University of Manchester, Alan Turing Building, Oxford Road, Manchester M13 9PL, UK

¹⁷School of Astronomy and Space Science, Nanjing University, 163 Xianlin Avenue, Nanjing 210023, China

Accepted 2020 May 6. Received 2020 May 6; in original form 2020 March 26

ABSTRACT

We present timing solutions and analyses of 11 pulsars discovered by the Five-hundred-meter Aperture Spherical radio Telescope (FAST). These pulsars were discovered using an ultrawide bandwidth receiver in drift-scan observations made during the commissioning phase of FAST, and were then confirmed and timed using the 64-m Parkes Radio Telescope. Each pulsar has been observed over a span of at least one year. Highlighted discoveries include PSR J0344–0901, which displays mode-changing behaviour and may belong to the class of so-called swooshing pulsars (alongside PSRs B0919+06 and B1859+07); PSR J0803–0942, whose emission is almost completely linearly polarized; and PSRs J1900–0134 and J1945+1211, whose well-defined polarization angle curves place stringent constraints on their emission geometry. We further discuss the detectability of these pulsars by earlier surveys, and highlight lessons learned from our work in carrying out confirmation and monitoring observations of pulsars discovered by a highly sensitive telescope, many of which may be applicable to next-generation pulsar surveys. This paper marks one of the first major releases of FAST-discovered pulsars, and paves the way for future discoveries anticipated from the Commensal Radio Astronomy FAST Survey.

Key words: surveys – stars: neutron – pulsars: general.

* E-mail: andrew.cameron@csiro.au (ADC); dili@nao.cas.cn (DL)

1 INTRODUCTION

The completion of the Five-hundred-meter Aperture Spherical radio Telescope (FAST, Nan et al. 2011; Li & Pan 2016; Jiang et al. 2020), located in China’s Guizhou province, represents a significant achievement in radio astronomy. FAST currently stands as the world’s largest single-dish radio telescope, and the most sensitive operating within the 270–1620 MHz band. This increase in sensitivity naturally promises new advances in a number of areas of research (e.g. see the mini-volume published in Li, Dickey & Liu 2019). The discovery and study of radio pulsars, a mainstay of single-dish radio astronomy for over 50 yr, is one area of particularly high priority.

Between 2017 August and 2018 February, FAST conducted an initial set of drift-scan observations in a pulsar search mode using its ultrawide-bandwidth receiver (UWB). While these observations were primarily for commissioning purposes, they also served as a pathfinder for the Commensal Radio Astronomy FAST Survey (CRAFTS, Li et al. 2018), allowing for the development of pulsar search pipelines and computational infrastructure, which will eventually be applied to the full-scale survey. CRAFTS, along with the Search of Pulsars in Special Population (SP², Pan et al. 2020) represent the two major pulsar search efforts to be carried out by FAST.

To date, 70 candidates have been identified using the UWB, out of which 51 have been confirmed¹ in this initial set of drift-scan observations. FAST, however, is limited in its efficiency at both confirming and timing these new pulsars. This was largely due to the fact that FAST’s slew rate is relatively slow, with a regular source changing time between 5 and 10 min. This makes short follow-up observations of multiple targets, the most common mode of regular timing, less efficient. Therefore, the CRAFTS team elected to purchase observing time on the 64-m Parkes Radio Telescope to facilitate these follow-up observations. As Parkes does not have a perfect overlap in sky coverage with FAST, the 100-m Effelsberg Radio Telescope was also used in order to follow-up those pulsars in the northern portion of the FAST sky (Cruces et al., in preparation).

In this paper, we describe 11 pulsars, discovered by FAST with the UWB receiver, that have now been monitored with the Parkes telescope for at least one year, thereby enabling a timing solution for each pulsar to be determined. In Section 2, we describe the Parkes observations along with our confirmation and timing strategy. The timing solutions for each of the 11 pulsars presented in this paper are listed in Section 3, while Section 4 describes the unique features of interest of each pulsar in turn. In Section 5, we discuss both whether FAST was necessary in the discovery of these pulsars, and why more FAST pulsars were not confirmed by Parkes despite attempts to do so. We also highlight lessons learned as part of this project which may be applicable to the next generation of pulsar surveys. We finally summarize our conclusions in Section 6.

2 OBSERVATIONS AND DATA REDUCTION

The UWB is a single-pixel receiver observing between frequencies of 270–1620 MHz. The system temperature T_{sys} of the receiver was measured as being between $60 \text{ K} < T_{\text{sys}} < 70 \text{ K}$ (Qian et al. 2019). The full width at half-maximum (FWHM) of the UWB beam at 270 MHz is about 15 arcmin, corresponding to a source crossing time of one minute at $\delta = 0^\circ$.

Table 1. Parameters for the observations conducted as part of this research, including the system temperature (T_{sys}), central frequency (f_c), bandwidth (Δf), number of frequency channels (n_{chan}), and the coherent de-dispersion capability of each receiver/backend combination. Parameters for the UWL are taken from Table 2 of Hobbs et al. (2019).

Receiver	Backend	Coherent	T_{sys} (K)	f_c (MHz)	Δf (MHz)	n_{chan}
MB20	PDFB4	N	23	1369	256	1024 ^a
	BPSR	N	23	1382	400 ^b	1024
UWL	PDFB4	N	23	1369	256	1024 ^a

^aPDFB4 search mode observations were recorded with 512 channels.

^bThe usable bandwidth of BPSR is reduced to 340 MHz due to strong RFI from the *Thuraya 3* satellite above ~ 1540 MHz.

Each observation recorded by FAST was searched independently by three data-processing pipelines, incorporating both periodicity and single-pulsar search techniques. Due to the impact of radio-frequency interference (RFI) and the dropping efficiency of the UWB beyond 1 GHz, the searches were primarily carried out in radio frequencies below ~ 800 MHz. Further details of these observations and the applied pulsar-searching techniques can be found in Qian et al. (2019) and Yu et al. (2019).

A total of 70 pulsar candidates have been identified in data recorded by FAST’s UWB as part of its drift-scan observations. Of the 70 wide-band candidates, only 28 are visible from the Parkes Radio Telescope. Confirmation observations of these candidates with Parkes began in late 2017 using the 21-cm multibeam receiver (MB20; Staveley-Smith et al. 1996) in combination with multiple backend systems, including the Berkeley Parkes Swinburne Recorder² (BPSR) and the Parkes Digital Filter Bank backend system (PDFB4). The observing specifications of both of these configurations can be found in Table 1.

These confirmation observations were conducted on an ad hoc and opportunistic basis in order to maximize the number of confirmed pulsars within only a limited amount of available observing time. As a result, we did not implement a formal protocol when attempting to follow-up each candidate. An initial confirmation observation typically consisted of an initial 3600-s long scan centred on the candidate position as provided by the FAST team. Each observation was then processed through a PRESTO³-based periodicity search (Ransom 2001), including RFI-mitigation in both the time and frequency domains as well as a limited acceleration search (typically as high as $\sim 5 \text{ ms}^{-2}$). In the event of a non-detection of the candidate, further observations were conducted based upon the merits of the candidate signal. These included repeated observations on the central position (to account for any scintillation effects) with scans up to ~ 7000 s in duration, as well as offset-gridding observations in an attempt to account for errors in the provided candidate positions. These grids typically followed the ‘ring-of-3’ technique set out in Ng et al. (2015).

In summary, of the 28 pulsar candidates visible from Parkes, 27 candidates were observed, resulting in 13 successful pulsar confirmations. Of these 13 pulsars, one (PSR J1822+26) was handed over for long-term timing and monitoring by Effelsberg due to its high northern declination and will feature in a separate publication (Cruces et al. in preparation). Another (PSR J1824–0132) was found to have already been discovered as part of the High

¹The list of confirmed new pulsars can be found at <https://crafts.bao.ac.cn>

²<http://www.astronomy.swin.edu.au/pulsar/?topic = bpsr>

³<http://www.cv.nrao.edu/~sransom/presto>

Time Resolution Universe Southern Intermediate Latitude Survey (HTRU-S MedLat, Burgay et al. 2019), and so was not pursued for further study. A further pulsar (PSR J1851–0633) was found to have been previously discovered by the HTRU-S Galactic Plane Survey (HTRU-S LowLat; Cameron et al. 2020), but lacked a timing solution⁴ and was therefore retained for further study. After accounting for these caveats, 11 confirmed pulsars remained as part of our long-term-monitoring campaign.

Once a pulsar candidate was confirmed by Parkes, it was then assigned to a long-term monitoring program in order to determine a phase-connected timing solution and further explore its emission properties. Each pulsar was observed with an irregular cadence, with observations typically separated by 1–2 weeks. These were initially carried out using the MB20 receiver and PDFB4 backend, using the configuration reported in Table 1. However, due to the role of Parkes in tracking the passage of the *Voyager 2* spacecraft through the Solar system’s heliopause region (see e.g. Strauss 2019), the MB20 receiver was removed from the telescope in mid-October of 2018. Monitoring observations were then transitioned to the recently commissioned ultrawide-bandwidth low-frequency (UWL) receiver (Hobbs et al. 2019), which can observe over a continuous bandwidth between 704 and 4032 MHz. However, although wide-band data were recorded simultaneously using the MEDUSA backend for all UWL observations, this paper will only consider the narrow-band PDFB4 data (256 MHz centred at 1369 MHz). A study of the wide-band properties of each of the 11 pulsars discussed in this paper will be reserved for a future publication.

All observations⁵ recorded by both the MB20 and UWL receivers were processed through a standard reduction methodology. Each PSRFITS-format timing archive was manually cleaned in both the time and frequency domains following visual inspection using the PSRCHIVE⁶ software package (Hotan, van Straten & Manchester 2004). Polarization calibration was conducted against an observation of a pulsed noise diode in order to account for the differential gain and phase between the receiver’s polarization feeds. Each observation was then flux calibrated with reference to observations taken of HYDRA A,⁷ which were typically separated in time from each pulsar observation by 1–2 weeks.

3 PULSAR PROPERTIES AND ANALYSIS

Timing solutions for each of the 11 pulsars are given in Tables 2–4. We note that both PSR J1900–0134 (Qian et al. 2019) and PSR J1926–0652 (Zhang et al. 2019) have previously been published with complete timing solutions based on earlier versions of the data presented here. In each case, our updated solution represents a significant improvement in timing precision.

Fig. 1 shows our 11 pulsars plotted on a $P-\dot{P}$ diagram against the known pulsar population. All 11 pulsars are situated within the island of canonical, unrecycled pulsars, and appear to represent a collection of older, slower pulsars. Although it is hard to draw meaningful conclusions based on such a small collection of pulsars, it is notable that only 3 of the 70 candidates identified by FAST’s

UWB receiver have periods that would potentially qualify them as recycled millisecond pulsars (MSPs). The 11 pulsars we report would therefore seem to be representative of the larger set of FAST UWB candidates. It is likely that this apparent population bias is due to a number of overlapping selection effects.

In order to develop each pulsar’s timing solution, each observation was processed through a range of software packages including PSRCHIVE, DSPSR⁹ (van Straten & Bailes 2011), SIGPROC¹⁰ (Lorimer 2011), PRESTO, TEMPO¹¹, and TEMPO2¹² (Hobbs, Edwards & Manchester 2006). Pulse times-of-arrival (TOAs) were first produced by summing each observation in both frequency and polarization, before partially summing in time and cross-correlating each summed profile against a standard reference pulse profile. Initial timing solutions were then developed using TEMPO together with a modified version of the DRACULA¹³ software package, which solves for the global rotation count of a pulsar between discrete observations using the phase-jump technique described by Freire & Ridolfi (2018).

Following the development of these initial timing solutions, each observation was then iteratively refit in order to generate progressively more precise TOAs, which in turn allowed for the production of more precise timing solutions. Each new set of TOAs was partially summed alternatively in either the time or frequency domains in order to also fit for each pulsar’s dispersion measure (DM). Once no further significant improvements in precision could be made, the refined timing solutions (as listed in Tables 2–4) were then produced using TEMPO2 and a final set of time-domain TOAs.

The residuals from these timing models are shown in Fig. 2, after having been weighted such that their reduced $\chi^2 = 1$ (Tables 2–4 provide the TEMPO2 EFAC weighting values). Each set of TOAs appears to be distributed in an approximately Gaussian manner, with no remaining systematic trends, indicating that each model is well fitted. There is also no apparent long-term timing noise in any of the 11 pulsars. This remains true even when each observation is summed fully in time in order to reduce the number of TOAs and increase the available timing precision. However, given the fact that no pulsar in this set has been observed continuously for longer than ~ 2 yr, such timing noise is likely to become detectable with longer observing timescales.

Estimates of the distance to each pulsar based upon their measured DM values were calculated according to both the NE2001 model (Cordes & Lazio 2002) and the YMW16 model (Yao et al. 2017) of the Galactic free electron density, and are also provided in Tables 2–4. We do not attempt to evaluate the relative accuracy of these models in this paper, and present both models as a reflection of the large uncertainties typically involved in DM-distance estimation. This fact is highlighted in the case of PSRs J0021–0909, J0529–0715, and J2323+1214, for which at least one model indicates a DM-distance to the pulsar exceeding the model’s limits along that particular line of sight, which if true would place the pulsar outside of our Galaxy. As we have no additional evidence to believe that any of these pulsars is extragalactic in nature, we instead attribute these particular distance estimates to inaccuracies in each model.

⁴PSR J1851–0633 is listed in Cameron et al. (2020), as PSR J1851–06.

⁵Observations for this paper were recorded under Parkes project codes PX500 and PX501, with additional data for PSR J1926–0652 recorded under P863 and P985.

⁶<http://psrchive.sourceforge.net>

⁷Recorded as part of the Parkes Pulsar Timing Array (PPTA) project (see e.g. Manchester et al. 2013; Xie et al. 2019).

⁹<https://sourceforge.net/projects/dspr>

¹⁰<http://sigproc.sourceforge.net>

¹¹<http://tempo.sourceforge.net>

¹²<http://www.atnf.csiro.au/research/pulsar/tempo2>

¹³<https://github.com/pfreire163/Dracula>

Table 2. Best-fitting TEMPO2 timing parameters for four FAST-discovered pulsars, PSRs J0021–0909, J0344–0901, J0529–0715, and J0803–0942. Each model uses a DE421 planetary ephemeris and TCB (Barycentric Coordinate Time) time units. Values in parentheses represent 1σ uncertainties on the final digit or digits after weighting the TOAs using the provided EFAC values such that the reduced $\chi^2 = 1$. DM distances are calculated according to the NE2001 model (Cordes & Lazio 2002) and the YMW16 model (Yao, Manchester & Wang 2017). τ_c , B_{surf} , and \dot{E} are calculated according to the equations presented in Lorimer & Kramer (2005).

Pulsar name	PSR J0021–0909	PSR J0344–0901	PSR J0529–0715	PSR J0803–0942	
Measured parameters					
Right ascension, α (J2000)	00:21:51.47(3)	03:44:37.471(2)	05:29:08.973(2)	08:03:26.848(13)	
Declination, δ (J2000)	–09:09:58.7(11)	–09:01:02.66(10)	–07:15:26.43(10)	–09:42:50.81(14)	
Spin frequency, ν (s^{-1})	0.43212768588(3)	0.815656977709(8)	1.450907946316(17)	1.75052694621(4)	
Spin frequency derivative, $\dot{\nu}$ (s^{-2})	$-1.94(3) \times 10^{-16}$	$-2.3091(10) \times 10^{-15}$	$-1.2114(17) \times 10^{-15}$	$-3.558(5) \times 10^{-15}$	
Dispersion measure, DM ($\text{cm}^{-3} \text{pc}$)	25.2(10)	30.9(3)	87.3(4)	21.1(3)	
Fitting parameters					
First TOA (MJD)	58194.1	58199.2	58199.2	58314.2	
Last TOA (MJD)	58715.8	58715.9	58710.9	58705.2	
Timing epoch (MJD)	58388.0	58393.0	58372.0	58410.0	
Number of TOAs	102	586	203	199	
Total integration time (h)	20.8	61.1	54.2	61.1	
Weighted rms residual (μs)	1390	1264	790	466	
TOA weighting factor, EFAC	1.82	1.54	1.60	1.04	
Derived parameters					
Galactic longitude, l ($^\circ$)	100.290	197.397	210.065	230.070	
Galactic latitude, b ($^\circ$)	–70.726	–45.333	–21.582	11.197	
Spin period, P (ms)	2314.13082912(16)	1226.005572598(12)	689.223601359(8)	571.256559156(14)	
Spin period derivative, \dot{P}	$1.039(16) \times 10^{-15}$	$3.4708(15) \times 10^{-15}$	$5.755(8) \times 10^{-16}$	$1.1612(16) \times 10^{-15}$	
DM distance, d (kpc)					
	NE2001	1.3	1.5	>46	1.3
	YMW16	>25	1.5	7.0	0.8
Characteristic age, τ_c (Myr)	35.2	5.58	18.9	7.77	
Surface magnetic field, B_{surf} (10^{10}G) ..	155	206	63.0	81.4	
Spin-down luminosity, \dot{E} ($10^{30} \text{erg s}^{-1}$)	3.31	74.4	69.4	246	

Integrated pulse profiles for each of the 11 pulsars are shown in Figs 3 and 4. These profiles were constructed by summing each pulsar’s calibrated observations in time on a per-receiver basis,¹⁴ using each pulsar’s timing solution to ensure coherent phase alignment. The resulting summed profile with the highest signal-to-noise ratio (S/N) was then selected for further analysis. The total integration time of the observations used to construct this chosen file can be found in Table 5. The rotation measure (RM) of each pulsar was determined and applied using the RMFIT software package before further summing each file in frequency. The resulting time- and frequency-summed profiles were then plotted using PAV after having been rotated such that the profile peak was at a pulse phase of approximately 0.5.

Further details regarding the pulsed emission of each pulsar are listed in Table 5. Pulse widths at 50 per cent and 10 per cent of the pulse peak (W_{50} and W_{10} , respectively) were measured by modelling each profile in PAAS using a series of Gaussian curves, against which the pulse widths were measured using PDV. The flux density at 1400 MHz (S_{1400}) was calculated using the JFLUX software package, which allows a user-defined on-pulse region. Prior to the derivation of a timing solution, each pulsar’s position was only known to within a precision of approximately 0.12° . Consequentially, each pulsar was typically observed at an offset from its true position, which would cause a reduction in its apparent flux density. We corrected for this offset following the method of Ng et al. (2015),

wherein we modelled the primary beam within the FWHM as a Gaussian and corrected the measured flux value S_{obs} according to the expression

$$S_{1400} = S_{\text{obs}} \exp\left(\frac{\theta^2}{2\sigma^2}\right), \quad (1)$$

where θ is the angular offset between the position of the pulsar and the telescope, and σ is given by

$$\sigma = \frac{\text{FWHM}}{2\sqrt{2 \ln 2}}. \quad (2)$$

For both the MB20 and UWL receivers, $\text{FWHM} \simeq 0.24^\circ$ at 1400 MHz, therefore $\sigma \simeq 0.1^\circ$.

3.1 Polarization

In order to measure the polarization properties of each profile, we used the PSRSALSA¹⁵ software package (Weltevrede 2016). The PPOL tool was used to extract the Stokes I_i (total intensity) and V_i (circular polarization) values of each profile bin, as well as the bias-corrected value of L_i (linear polarization). For each parameter, the off-pulse root-mean-squared (rms) was also calculated, here termed as σ_I , σ_L , and σ_V respectively.¹⁶ The W_{10} of each profile was then used to determine a precise on-pulse region, over which the values of I_i , L_i ,

¹⁴Differences in the header information between the files produced by the MB20 and UWL receivers prevented them being easily summed together.

¹⁵<https://github.com/weltevrede/psrsalsa>

¹⁶As bias-correction involves zeroing the mean of each parameter, the rms measurement is equivalent to the standard deviation σ .

Table 3. Best-fitting TEMPO2 timing parameters for four FAST-discovered pulsars, PSRs J1851–0633, J1900–0134, J1919+2621, and J1926–0652. Details as per Table 2.

Pulsar name	PSR J1851–0633 ^a	PSR J1900–0134	PSR J1919+2621	PSR J1926–0652
Measured parameters				
Right ascension, α (J2000)	18:51:41.646(5)	19:00:26.174(5)	19:19:41.013(4)	19:26:37.041(6)
Declination, δ (J2000)	–06:33:48.4(2)	–01:34:38.2(3)	+26:21:29.46(9)	–06:52:42.7(4)
Spin frequency, ν (s ^{–1})	0.520751388080(6)	0.545752603980(8)	1.53489092390(5)	0.621575004134(7)
Spin frequency derivative, $\dot{\nu}$ (s ^{–2})	$-6.502(13) \times 10^{-16}$	$-9.0812(13) \times 10^{-15}$	$-1.286(5) \times 10^{-15}$	$-1.512(7) \times 10^{-16}$
Dispersion measure, DM (cm ^{–3} pc)	229.1(7)	178.1(5)	96.5(2)	85.3(7)
Fitting parameters				
First TOA (MJD)	58221.7	58007.4	58271.7	58034.2
Last TOA (MJD)	58633.7	58531.9	58632.7	58695.7
Timing epoch (MJD)	58382.0	58269.0	58333.0	58308.0
Number of TOAs	63	117	274	463
Total integration time (h)	15.0	21.6	6.8	46.4
Weighted rms residual (μ s)	469	827	550	2652
TOA weighting factor, EFAC	0.92	1.10	1.22	1.20
Derived parameters				
Galactic longitude, l (°)	27.114	32.553	59.535	30.751
Galactic latitude, b (°)	–3.044	–2.721	5.993	–10.936
Spin period, P (ms)	1920.30213052(2)	1832.33207264(3)	651.51209407(2)	1608.816302697(18)
Spin period derivative, \dot{P}	$2.398(5) \times 10^{-15}$	$3.0490(4) \times 10^{-14}$	$5.46(2) \times 10^{-16}$	$3.914(17) \times 10^{-16}$
DM distance, d (kpc)				
	NE2001	5.0	4.5	4.5
	YMW16	6.2	4.9	6.1
Characteristic age, τ_c (Myr)	12.7	0.950	18.9	65.0
Surface magnetic field, B_{surf} (10 ¹⁰ G) ..	215	747	59.6	79.4
Spin-down luminosity, \dot{E} (10 ³⁰ erg s ^{–1})	13.4	196	78.0	3.71

^aAs noted previously, PSR J1851–0633 was published in Cameron et al. (2020) as PSR J1851–06, but without a timing solution.

Table 4. Best-fitting TEMPO2 timing parameters for three FAST-discovered pulsars, PSRs J1931–0144, J1945+1211, and J2323+1214. Details as per Table 2.

Pulsar name	PSR J1931–0144	PSR J1945+1211	PSR J2323+1214
Measured parameters			
Right ascension, α (J2000)	19:31:32.025(9)	19:45:11.56(3)	23:23:21.619(7)
Declination, δ (J2000)	–01:44:22.5(4)	+12:11:46.2(7)	+12:14:12.70(16)
Spin frequency, ν (s ^{–1})	1.68446199761(3)	0.21022552160(2)	0.265993420483(5)
Spin frequency derivative, $\dot{\nu}$ (s ^{–2})	$-8.3(3) \times 10^{-17}$	$-1.67(2) \times 10^{-16}$	$-1.307(4) \times 10^{-16}$
Dispersion measure, DM (cm ^{–3} pc)	38.3(13)	92.7(16)	29.0(3)
Fitting parameters			
First TOA (MJD)	58034.2	58051.2	58151.2
Last TOA (MJD)	58655.8	58642.7	58707.7
Timing epoch (MJD)	58282.0	59298.0	58315.0
Number of TOAs	87	144	98
Total integration time (h)	15.9	8.8	20.9
Weighted rms residual (μ s)	1755	5185	508
TOA weighting factor, EFAC	1.21	2.85	1.43
Derived parameters			
Galactic longitude, l (°)	35.974	49.984	91.595
Galactic latitude, b (°)	–9.711	–6.076	–45.209
Spin period, P (ms)	593.661359782(12)	4756.7963794(5)	3759.49148736(8)
Spin period derivative, \dot{P}	$2.93(12) \times 10^{-17}$	$3.79(5) \times 10^{-15}$	$1.847(5) \times 10^{-15}$
DM distance, d (kpc)			
	NE2001	1.7	3.9
	YMW16	1.4	3.8
Characteristic age, τ_c (Myr)	320	19.8	32.2
Surface magnetic field, B_{surf} (10 ¹⁰ G) ..	13.2	425	264
Spin-down luminosity, \dot{E} (10 ³⁰ erg s ^{–1})	5.5	1.40	1.37

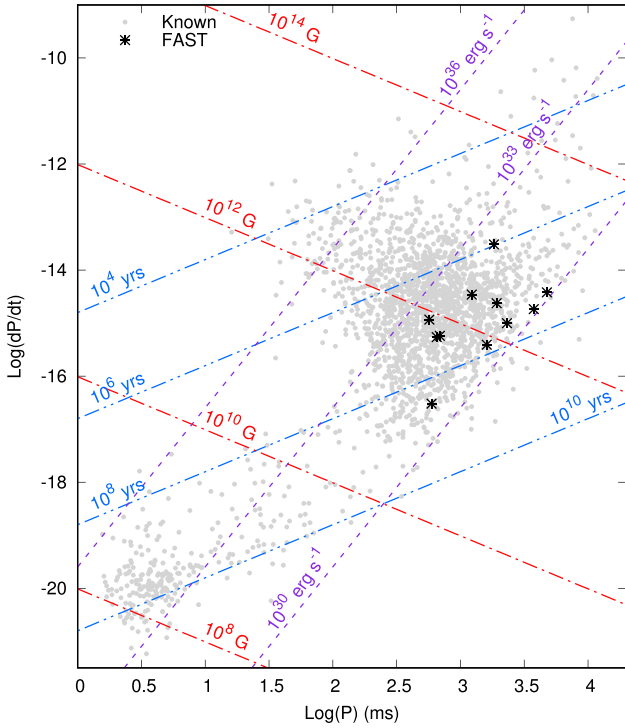


Figure 1. A P – \dot{P} diagram displaying the 11 newly discovered pulsars against the known pulsar population, consisting of 2217 pulsars for which PSRCAT⁸ (Manchester et al. 2005) lists well-measured values of P and \dot{P} . Also shown are lines of constant spin-down luminosity (purple, single dashes), surface magnetic field strength (red, dashed–dotted), and characteristic age (blue, dashed–double dot). Note that PSRs J0529–0715 and J1919+2621 appear almost co-incident in this plot, due to their very similar values of P and \dot{P} .

and V_i were then summed, such that

$$I = \sum_{i=1}^N I_i \quad (3)$$

and similarly for L and V , where N is the number of phase bins in the on-pulse region. The calculation of L/I and V/I was then straightforward, with the error on each measurement determined by

$$\sigma_{(L/I)} = \frac{L}{I} \times \left(\sqrt{\left(\frac{\sigma_I}{I}\right)^2 + \left(\frac{\sigma_L}{L}\right)^2} \right) \sqrt{N} \quad (4)$$

and similarly for $\sigma_{(V/I)}$.

To calculate $|V|$, we followed a method analogous to that of Karastergiou & Johnston (2004). We note that their methodology was designed for evaluating $|V|$ in the case of single pulses. We adapt this method for our fully integrated profiles, with the caveat that when analysed on a single-pulse basis, each pulsar may show significantly higher $|V|$ than the pulse-averaged values described here. For each bin in the pulse profile, we produced a bias-corrected estimate of $|V|_i$, according to

$$|V|_i = |V_i| - \sqrt{\frac{2}{\pi}} \sigma_V. \quad (5)$$

We then determined $\sigma_{|V|}$ as the rms of the same off-pulse region used to calculate σ_I , σ_L , and σ_V . The final measurement of $|V|/I$ and its associated uncertainty were then produced in the same manner as L/I and V/I , with reference to equations (3) and (4).

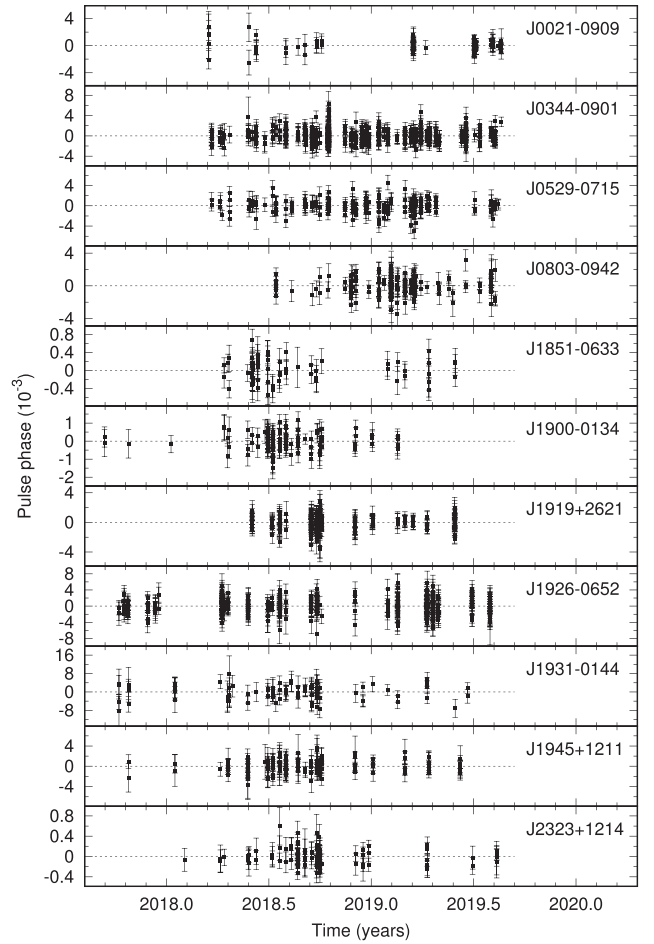


Figure 2. TEMPO2 timing residuals for 11 pulsars, based upon the timing solutions listed in Tables 2–4. In each case, the TOA error bars have been weighted such that the reduced $\chi^2 = 1$. The dashed line in each plot represents the zero-line, and corresponds to the arrival times predicted by each timing solution. Note that the vertical scale (given in units of pulse phase) differs for each pulsar.

3.2 RVM fitting

A small subset of our 11 pulsars have sufficiently well-defined polarization angle (PA) curves so as to enable their viewing geometry to be modelled using the Rotating Vector Model (RVM; Radhakrishnan & Cooke 1969). Within this model, the PA of the linearly polarized emission of each pulsar is a function of the angle α between the rotational and magnetic axes, the angle β of closest approach between the line of sight and the magnetic axis, and the rotational phase of the pulsar ϕ . In our analysis, we follow the methodology of Rookyard, Weltevrede & Johnston (2015), using the PSRSALSA software package to determine constraints on the α and β parameters for each pulsar. We note that PSRSALSA uses the same conventions for α and β as used by Radhakrishnan & Cooke (1969) and Rookyard et al. (2015), while other publications use a modified convention (PSR/IEEE; see e.g. Everett & Weisberg 2001; van Straten et al. 2010; Johnston & Kramer 2019) wherein β has the opposite sign. Care should be taken when comparing and converting between these conventions.

While a simple RVM fit to a pulsar’s measured PA swing can provide some constraints on the possible values of α and β , a more

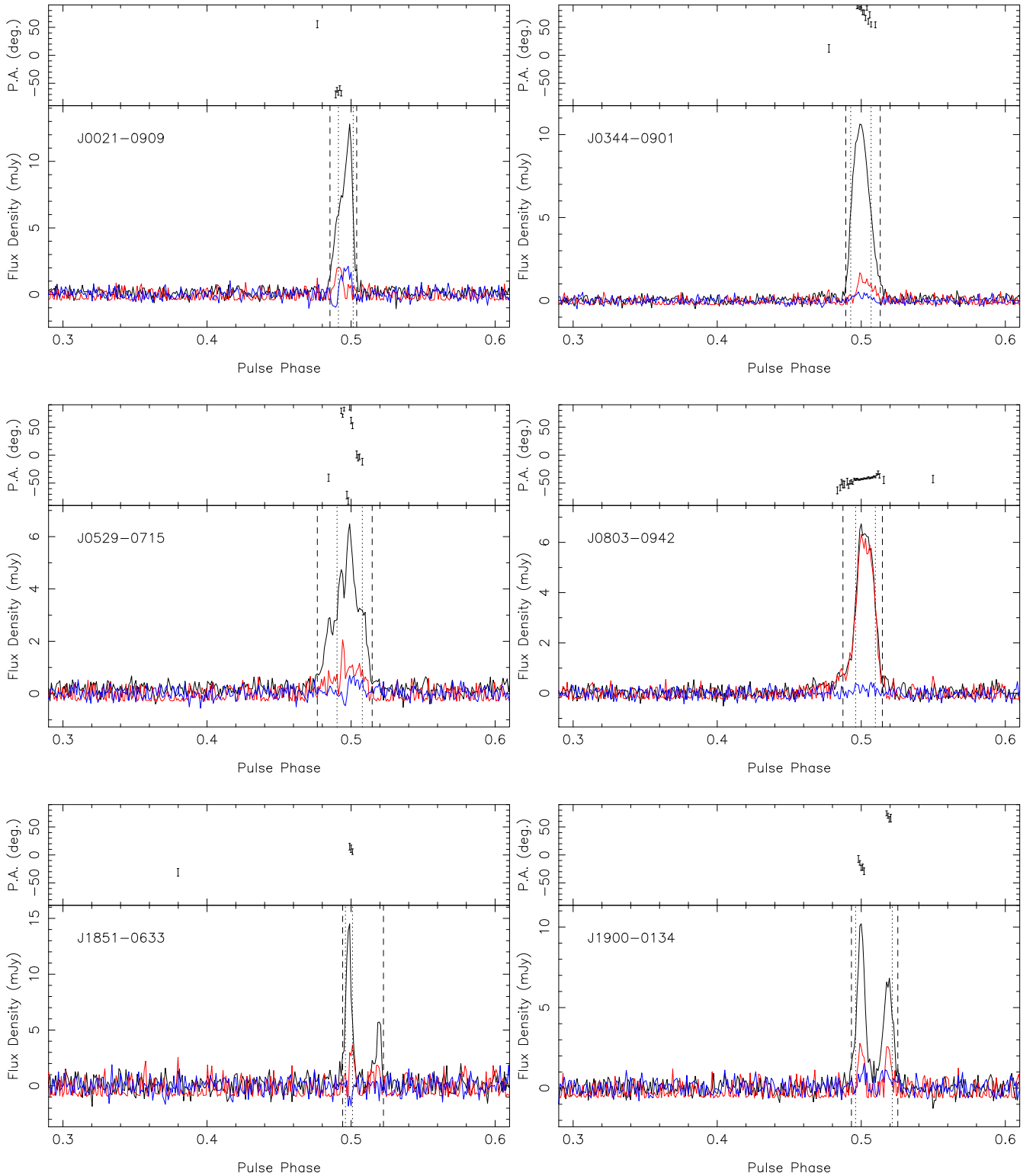


Figure 3. Integrated pulse profiles for six FAST-discovered pulsars, PSRs J0021–0909, J0344–0901, J0529–0715, J0803–0942, J1851–0633, and J1900–0134. The total integration time used to construct each profile is provided in Table 5. Each profile has been rotated so that its peak is at a pulse phase of 0.5. Total intensity (I) is shown in black, while the linearly polarized (L) and circularly polarized (V) components are shown in red and blue, respectively. The approximate widths of each profile’s width (as per Table 5) are marked, including the W_{10} (large vertical dash) and W_{50} (small vertical dash). Above each plot is shown the changing PA of the linearly polarized flux, referenced to a central frequency of 1369 MHz.

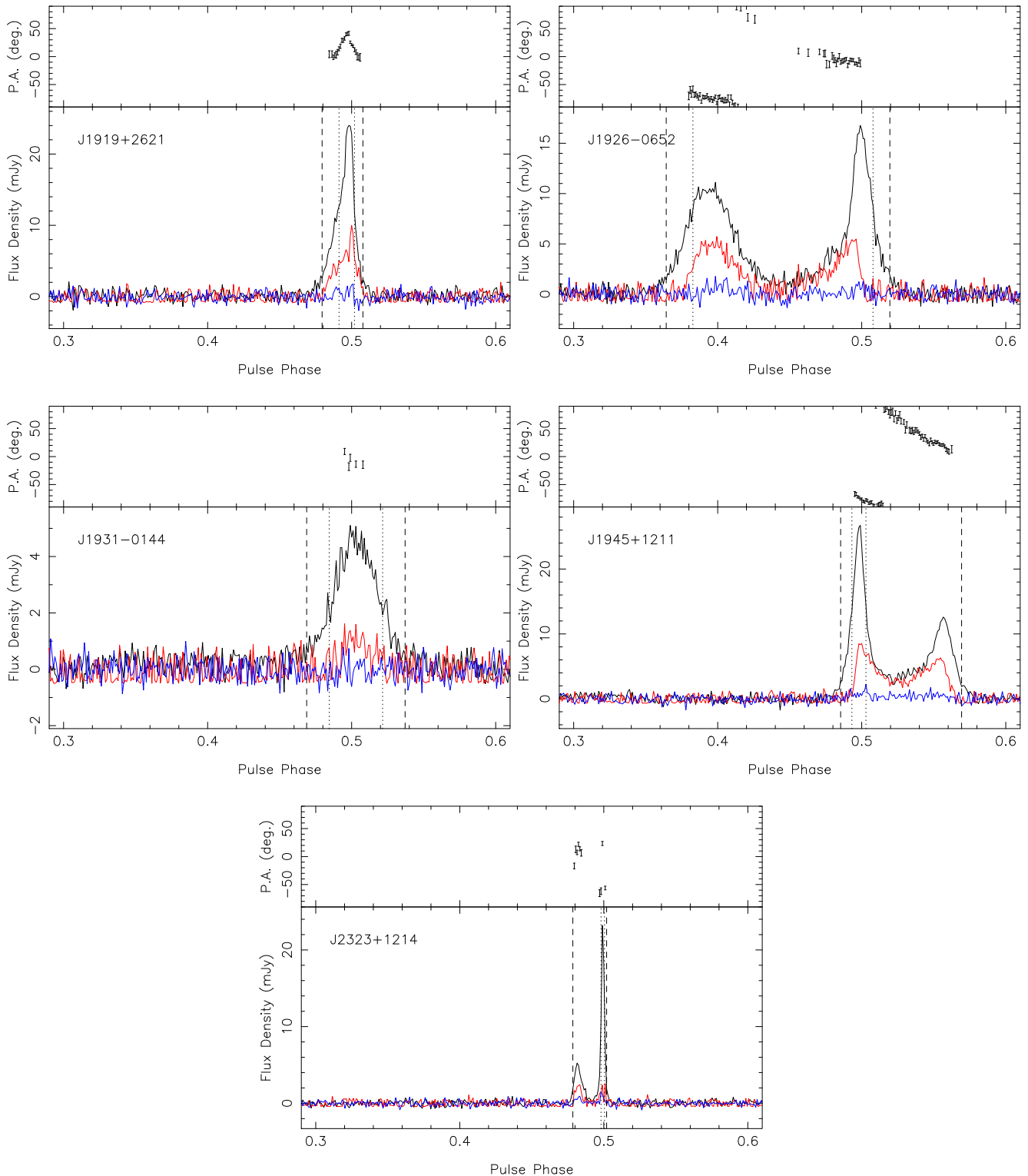


Figure 4. Integrated pulse profiles for five FAST-discovered pulsars, PSRs J1919+2621, J1926–0652, J1931–0144, J1945+1211, and J2323+1214. Details as per Fig. 3.

detailed analysis as laid out in Rookyard et al. (2015) can provide significant additional constraint on the viewing geometry. These constraints depend on the width of the open-field-line region W_{open} , the pulse phase of the inflection point ϕ_0 (at which the line of sight passes through the steepest gradient in the PA curve), and the pulse

phase of the fiducial point ϕ_{fid} (the phase at which the line of sight passes through the plane containing both the rotational and magnetic axes). These measurements will also depend upon the assumptions made in modelling the emission region of the pulsar and how this model relates to the observed emission profile.

Table 5. Pulse profile, flux density, and polarization properties of 11 FAST-discovered pulsars. Listed for each pulsar are its flux density and luminosity at 1400 MHz (S_{1400} and L_{1400} , respectively), pulse width at 50 per cent and 10 per cent of the profile peak (W_{50} and W_{10} , respectively), RM, and fractional linear, circular, and absolute circular polarization (L/I , V/I , and $|V|/I$, respectively). Luminosities are calculated according to the NE2001 model (left-hand column, Cordes & Lazio 2002) and the YMW16 model (right-hand column, Yao et al. 2017). Also listed are the receivers and total integration time ($\sum t_{\text{obs}}$) used to construct the integrated pulse profiles shown in Figs 3 and 4. Values in parentheses represent 1σ uncertainties on the final digit or digits.

PSR	S_{1400} (mJy)	L_{1400} (mJy kpc ²)	W_{50} (ms)	W_{10} (ms)	RM (rad m ⁻²)	L/I (per cent)	V/I (per cent)	$ V /I$ (per cent)	Receiver	$\sum t_{\text{obs}}$ (h)
J0021–0909	0.134(11)	0.21 >84	23.8	42.7	–15(18)	14.6(18)	7.7(12)	11.8(7)	UWL	15.0
J0344–0901	0.155(7)	0.36 0.35	17.1	24.5	7(11)	12.3(9)	2.7(6)	1.3(4)	UWL	41.7
J0529–0715	0.125(8)	>260 6.1	11.9	26.3	–46(3)	25(2)	4.4(12)	1.9(7)	UWL	32.1
J0803–0942	0.102(7)	0.18 0.068	8.21	15.8	–17.5(5)	95.5(18)	4.1(10)	1.3(6)	UWL	48.4
J1851–0633	0.12(2)	2.9 4.6	9.16	55.0	513(8)	33(6)	–4(4)	1(2)	MB20	12.0
J1900–0134	0.202(15)	4.0 4.8	45.3	57.5	20(13)	25(3)	10.0(19)	5.3(11)	MB20	19.3
J1919+2621	0.57(3)	12 21	7.11	18.6	63.4(12)	36.0(16)	1.4(1.0)	2.3(6)	MB20	3.7
J1926–0652	1.01(3) ^a	8.6 28	202	251	–54(3)	48.1(16)	1.7(9)	1.2(6)	MB20	28.3
J1931–0144	0.196(14)	0.57 0.38	22.2	40.5	–50(3)	28(3)	–1.4(19)	–0.6(11)	MB20	11.3
J1945+1211	0.634(19)	9.7 9.0	48.8	396	–21.4(7)	51.6(13)	5.8(8)	2.0(5)	MB20	7.0
J2323+1214	0.144(18)	0.40 >90	9.62	86.9	–17(6)	24(2)	8.2(15)	2.6(9)	MB20	16.9

^aMeasured using only the portions of each observation when the pulsar’s emission was seen to be ‘on’. See Zhang et al. (2019) for further details.

In our analysis, we considered only a simple model of the emission region, where the observed profile is assumed to fully span the open-field-line region. We acknowledge that more complex models of the emission region exist (e.g. the core-cone model, see Rankin 1990, 1993), and intend to present a more sophisticated analysis (taking advantage of the full bandwidth of the UWL receiver) utilizing these models as part of a future publication. We therefore determined W_{open} using the W_{10} values listed in Table 5, with the uncertainty determined using the profile widths at 5 per cent and 15 per cent of the pulse peak (W_5 and W_{15} , respectively, again measured with reference to the analytic profile). The inflection point ϕ_0 was determined by PSRSALSA as part of the RVM-fitting procedure, which also provided an uncertainty for ϕ_0 . The fiducial point ϕ_{fid} was approximated as the mid-point of the profile according to the positions of the measured W_{10} values. The uncertainty on ϕ_{fid} was determined using the maximum left- and rightward offsets allowable for ϕ_{fid} from the measured positions of W_5 and W_{15} . However, in order to account for the expected relativistic aberration and retardation effects (see e.g. Blaskiewicz, Cordes & Wasserman 1991), only combinations where $\Delta\phi = \phi_0 - \phi_{\text{fid}} \geq 0$ were considered when determining acceptable geometries. We have explicitly indicated in the text where this restriction has been applied.

4 SUMMARIES OF INDIVIDUAL PULSARS

4.1 PSR J0021–0909

The profile of PSR J0021–0909 consists of a single asymmetric pulse, with a wide left ‘shoulder’ on the pulse indicating a profile which may have multiple underlying components. This hypothesis is bolstered by the observed changes in both L and V across the profile. The modest amount of L in the profile is concentrated on this left ‘shoulder’, and drops away at the same pulse phase as the sign of V is seen to change, with the highest concentration of V aligning with the primary pulse component to the right.

The remaining notable characteristic of PSR J0021–0909 is that it has often proved very difficult to detect during follow-up observations. The pulsar was classed as ‘undetectable’ in the PDFB4

and BPSR observing bands listed in Table 1 in approximately 58 per cent of observations, with individual integration times as long as 6000 s. Furthermore, in those observations in which the pulsar was detectable, its brightness was often seen to gradually vary in both time and frequency. This, coupled with the pulsar’s low DM and the lack of any sudden changes in the pulsar’s brightness (which might be indicative of nulling or moding) indicates that the primary cause of these non-detections is likely to be interstellar scintillation.

4.2 PSR J0344–0901

With a single-component pulse shape and only the weak suggestion of an asymmetric scattering tail, the pulse profile of PSR J0344–0901 comes close to the theoretical Gaussian ‘ideal’. While the pulsar possesses only modest linear polarization, it is sufficiently well defined to allow for a distinct PA swing to be measurable across the profile. However, attempts to model this curve using the RVM indicated that the inflection point ϕ_0 could not be well measured, and was likely to fall outside the region of phase sampled by the pulse profile. Subsequently, we were unable to place meaningful constraints on either the values of α or β for this pulsar, and we did not attempt to model its geometry further.

PSR J0344–0901 is otherwise notable for its unusual single-pulse behaviour. Typically, single-pulse information on PSR J0344–0901 is unavailable from Parkes data due to the pulsar’s low flux density. However, a 1-h observation on 2018 October 16 caught the pulsar during an unusually-strong up-scintillation, at roughly four times its mean flux density. This allowed for a study of the pulsar’s behaviour over much shorter time-scales than had previously been possible. Fig. 5 shows the TOAs derived from this observation, with one TOA for each of the 30-s subintegrations used to initially fold the data (each subintegration contains approximately 25 summed pulses).

It is evident from Fig. 5 that PSR J0344–0901 shows a type of mode-changing behaviour. The transitions between the ‘normal’ and ‘moded’ states are not sharp from one pulse to the next, but appear to take place gradually over the course of many tens of seconds. Similarly, the duration of each ‘moded’ state has only been seen to last between 1 and 2 min. In order to analyse the different states of

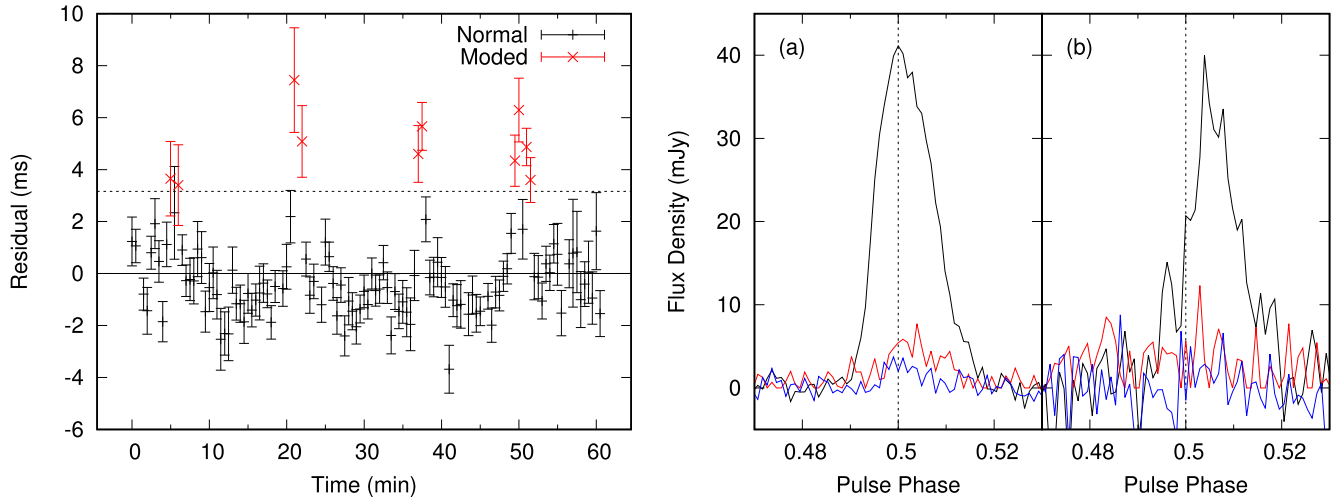


Figure 5. Mode-changing behaviour in a 1-h observation of PSR J0344–0901 recorded on 2018 October 16. The left-hand plot shows timing residuals from the observation, as calculated against the timing model described in Table 2. Each TOA was calculated using 30 s of data, or approximately 25 summed pulses. The dashed horizontal line corresponds to 2.5 times the weighted rms listed in Table 2. Subintegrations corresponding to the black TOAs below the line were summed to create the ‘normal’ profile seen in subplot (a). Subintegrations corresponding to the red TOAs above the line were summed to create the ‘moded’ profile seen in subplot (b). Both profiles were rotated equally such that the peak of the profile in (a) aligned to a pulse phase of 0.5, indicated by the vertical dashed line.

PSR J0344–0901 discretely, we have chosen a residual threshold of 2.5 times the weighted rms listed in Table 2 (roughly 3.2 ms) to distinguish between the two states, which is shown in subplot (a) of Fig. 5. As can be seen in subplot (b) of Fig. 5, the moded profile is characterized by a lag in the pulse peak of approximately 6 ms (or approximately 0.005 units of pulse phase), as well as a potential reduction in flux density. However, given the limited number of integrated pulses in subplot (b) (only ~ 250 pulses), the true flux density of the pulsar in its moded state is currently difficult to quantify.

It is therefore possible that PSR J0344–0901 may represent a similar class of object to PSR B0919+06 and PSR B1859+07 (Rankin, Rodriguez & Wright 2006). Both of these pulsars are seen to display similar gradual transitions between their normal and moded states (often referred to as ‘swooshes’), with the notable difference being that while PSR J0344–0901’s moded pulses are seen to lag, the moded pulses of PSR B0919+06 and PSR B1859+07 arrive early. In both of these previously known pulsars, a correlation has been found between their changing emission states and their spin-down rates (Perera et al. 2015, 2016), however it is too early to determine whether such a correlation exists within PSR J0344–0901.

We remark finally upon the apparent periodicity seen in Fig. 5, wherein the moding events in PSR J0344–0901 appear to be regularly spaced by approximately 16 min intervals. Similar periodicities have also been identified in PSR B0919+06 and PSR B1859+07 (Wahl et al. 2016), with the suggestion that previously undetected orbital motion may be responsible. This hypothesis was initially suspected in the case of PSR J0344–0901, however subsequent observations with FAST appear to have ruled out this scenario. In two 1-h observations, moding events were observed by FAST but with no apparent periodicity, while in a third 1-h observation, no moding events were observed at all. These observations are part of an ongoing study of PSR J0344–0901 with the FAST telescope, and be reported on in greater detail in a future publication.

4.3 PSR J0529–0715

PSR J0529–0715 displays one of the more complex profiles of the pulsars presented in this paper. In the development of an analytical standard for this pulsar, we employed four individual Gaussian components, one for the left and right ‘shoulders’ and one for each of the central pulse peaks. However, despite averaging over approximately 1.68×10^5 pulses, it remains uncertain whether each of these features are genuine, or whether the profile is still contaminated by noise. An analysis of the profile over time indicates that the shoulders remain relatively consistent between observations, but that the central peaks may in fact be a single peak of emission. Furthermore, with only a moderate amount of L and only scattered measures of PA across the profile, it is difficult to determine how well this analytical model maps to the true structure of the pulsar’s emission region. Higher S/N observations will assist in clarifying these ambiguities.

4.4 PSR J0803–0942

As seen in Fig. 3 and Table 5, the standout feature of PSR J0803–0942 is its extremely high fraction of linearly polarized flux, with its L/I measured at approximately 96 per cent. Although this is by far the highest L/I seen amongst the 11 pulsars presented here, it is not an unknown feature amongst the general population of pulsars whose flux densities and polarization characteristics have been measured at 1.4 GHz (see e.g. Johnston & Kerr 2018). This high L/I also allows for the measurement of PA across the entire pulse profile. However, the trend in PA appears to be almost flat, rising only slightly across the profile. Consequently, as with PSR J0344–0901, we are unable to provide useful constraints on ϕ_0 , α , or β for this pulsar, and we did not attempt to model its geometry further. Otherwise, PSR J0803–0942 has only minimal circular polarization, and displays a nearly symmetrical single-component profile, with the exception of a weak emission feature on the profile’s rising edge.

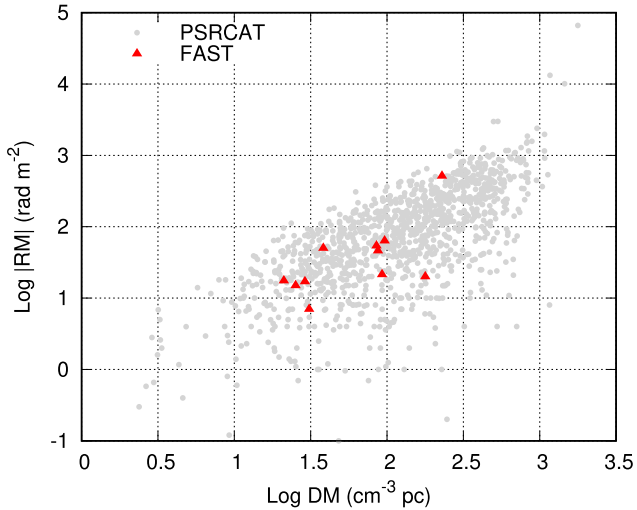


Figure 6. Positions of the 11 newly discovered pulsars (red triangles) within the DM–RM distribution of the known pulsar population (grey circles), consisting of 1166 pulsars for which PSRCAT (version 1.61, Manchester et al. 2005) lists well-measured values of both DM and RM.

4.5 PSR J1851–0633

The profile of PSR J1851–0633 contains two distinct components. With the current sensitivity available from Parkes, there is no detectable intermediate ‘bridging’ emission between these two components. The pulsar is moderately linearly polarized across both profile components, although it is presently only possible to obtain measurements of PA in the left component. A higher S/N profile may also allow for PA measurements in the right component, after which an RVM fit may be possible.

PSR J1851–0633 is also notable in that, as listed in Table 5, it possesses the highest RM of any of the pulsars listed in this paper by a significant margin. However, given the general correlation between increasing $|RM|$ and increasing DM as seen in Fig. 6, and the fact that PSR J1851–0633’s DM is also the largest of the pulsars presented in this paper, this large RM is not especially surprising. As shown in Fig. 6, its DM and RM values are well within the existing distribution, as are those of the other pulsars featured in this paper.

It is also worth briefly remarking on the fact that FAST was able to detect this higher DM pulsar despite its search at lower radio frequencies. The pulse-smearing effect of interstellar scattering, which degrades pulsar detectability, is known to increase both with increasing DM and decreasing frequency (see e.g. Bhat et al. 2004). However, PSR J1851–0633 was initially detected in a sub-banded search between 500 and 750 MHz, avoiding the worst of the scattering at the lowest end of the UWB frequency band.

4.6 PSR J1900–0134

As with PSR J185–0633, PSR J1900–0134 also shows a clearly double-peaked profile. However, unlike PSR J1851–0633, there does appear to be a weak ‘bridge’ of emission between the two primary components. Each of these components shows a moderate fraction of linearly polarized flux, along with a weaker yet significant fraction of circularly polarized flux. Also of note is PSR J1900–0134’s characteristic age; it is the youngest pulsar presented in this paper, with a τ_c of only 0.95 Myr.

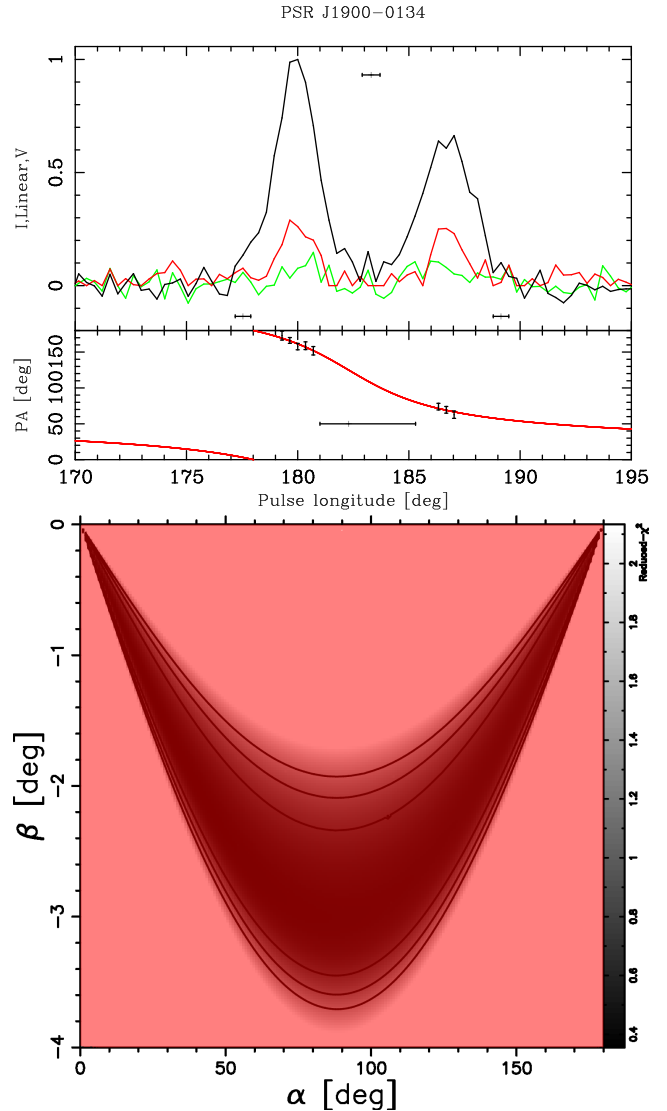


Figure 7. Constraints on the RVM fit and modelled geometry of PSR J1900–0134. The upper plot shows the pulsar’s polarization profile, with normalized total intensity I in black, linear polarization L in red, and circular polarization V in green. The horizontal polarization bar above the profile shows the position of the fiducial point ϕ_{fid} , while those below the profile show the points used to determine the profile width W_{open} . Measurements of PA are shown below the profile, along with a best-fitting RVM solution in red, corresponding to $\alpha = 7.0^\circ$ and $\beta = -0.4^\circ$ (as per our chosen convention for α and β , see Section 3.2). The horizontal error bar shows the position of ϕ_0 , which maps to the RVM solution at $\text{PA} = -55.2^\circ$. The lower plot shows a χ^2 map of α and β following the RVM fit to the PA values, with outwards contours corresponding to 1σ – 3σ , respectively. The region in red (here covering the entire lower plot, indicating a lack of constraint) shows the allowed geometry based upon W_{open} , ϕ_0 , and ϕ_{fid} , as per the methodology laid out in Section 3.2.

As seen in Fig. 3, PSR J1900–0134 also has well-constrained PA measurements across each of its primary components. We have therefore attempted to model the geometry of this pulsar by applying the RVM model as per the methodology laid out in Section 3.2. The resulting fit is shown in Fig. 7. Assuming that the visible profile fully spans the open-field-line region, we measured a pulse width of $W_{\text{open}} = 12.0^{+0.7}_{-0.7}$ with a fiducial phase chosen at the mid-point of the profile of $\phi_{\text{fid}} = 183.3^{+0.4}_{-0.4}$. Unfortunately, it seems likely that

the inflection phase of the PA swing ϕ_0 lies within the region of weak bridging emission where we are unable to directly measure values of PA, leaving its position uncertain. The best estimate provided by PSRSALSA is that $\phi_0 = 182.3^{+3.0}_{-1.3}$. Remembering the imposed restriction that $\Delta\phi \geq 0$, this results in $\Delta\phi = 0.0^{+2.3}_{-0.0}$.

From the results of the fit shown in Fig. 7, it seems clear that the geometry of PSR J1900–0134 can only be poorly constrained. While the impact angle is restricted to within $-4^\circ < \beta < 0^\circ$, the magnetic inclination angle α is essentially unconstrained. Attempting to further limit the geometry of the pulsar using our measured W_{open} and $\Delta\phi$ results in no additional constraint due to the large uncertainty in ϕ_0 . With reference to equation (3) in Rookyard et al. (2015), our measured $\Delta\phi$ would imply an upper limit on the emission height of $h_{\text{em}} \lesssim 880$ km. We note that taking the nominal values of ϕ_0 and ϕ_{fid} would result in $\Delta\phi < 0$, which may suggest that the detected profile does not fully fill the open-field-line region. However, this result may also be due to the large uncertainty in ϕ_0 .

4.7 PSR J1919+2621

PSR J1919+2621 presents a single-component, asymmetric, slightly triangular pulse profile. The profile contains a moderate amount of linear polarization, with little to no circular polarization. Perhaps the most striking feature comes from the unusual trend seen in the pulsar’s PA distribution. The PA trend experiences a sharp transition approximately coinciding with the profile peak, at which the sign of the slope changes value and a discrete jump in PA is observed. Due to this change in slope, and the fact that the jump is only very small (i.e. not close to 90°), it seems unlikely that this transition is due to an orthogonal polarization mode. Nor does the transition appear to directly coincide with any immediate features in the linear or circular polarization profiles. We therefore tentatively suggest that this transition indicates the presence of two overlapping emission regions within the open-field-line region of the pulsar, each with its own distinct polarization properties. This is not the first time such a non-orthogonal PA jump has been seen (see e.g. Dai et al. 2015; Johnston & Kerr 2018), and we will continue to investigate its nature with ongoing observations.

4.8 PSR J1926–0652

With the widest fractional duty cycle of any of the pulsars presented here, PSR J1926–0652 displays two dominant, well-separated pulse components, linked by an intermediate bridge of pulsed emission. The pulsar’s integrated profile displays substantial linear polarization, comprising nearly half of the total flux density, allowing for the measurement of a well-defined, characteristic PA swing across the profile. Further details regarding RVM-fitting and the geometry of PSR J1926–0652, as well its rich single-pulse behaviour, can be found in Zhang et al. (2019).

4.9 PSR J1931–0144

The profile of PSR J1931–0144 is perhaps the most unremarkable of the pulsars presented in this paper, with a broad, single-component Gaussian pulse. Although the profile shows moderate linear polarization, the low S/N of the profile prevents the measurement of more than a handful of PA values. The few PA data points shown in Fig. 4 hint at a more pronounced PA swing, which may be detectable with additional, more-sensitive observations. PSR J1931–0144 is otherwise notable for its low \dot{P} as listed in Table 4, placing it towards the bottom of the ‘normal’ pulsar

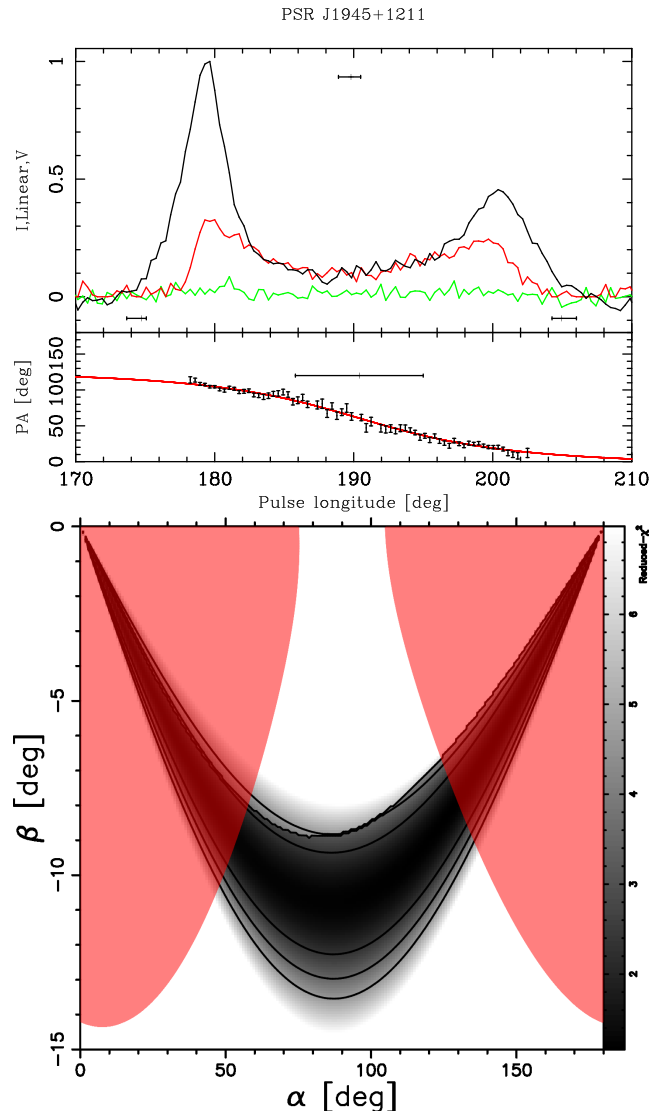


Figure 8. Constraints on the RVM fit and modelled geometry of PSR J1945+1211. Details as per Fig. 7. The best-fitting RVM solution corresponds to $\alpha = 142.5^\circ$ and $\beta = -6.1^\circ$. ϕ_0 maps to the RVM solution at $\text{PA} = 60.8^\circ$.

distribution in the $P-\dot{P}$ diagram in Fig. 1 and giving it the largest characteristic age of the reported pulsars, with $\tau_c = 320$ Myr.

4.10 PSR J1945+1211

The profile of PSR J1945+1211 appears almost as a mirror image of PSR J1926–0652, as it also possesses two clear peaks linked by a bridge of intermediate emission, but with the left peak being stronger than the right, the inverse of PSR J1926–0652. Also similar to PSR J1926–0652, roughly half of the total flux density of the pulsar is linearly polarized, again allowing for the measurement of a well-defined PA swing across almost the entire pulse profile. We have therefore attempted to model the geometry of this pulsar by applying the RVM model as per the methodology laid out in Section 3.2.

The resulting RVM fit is shown in Fig. 8. Assuming that the visible profile fully spans the open-field-line region, we measured a pulse width of $W_{\text{open}} = 30.6^{+2.1}_{-1.1}$ with a fiducial phase chosen at

the mid-point of the profile of $\phi_{\text{fid}} = 189.8^{\circ+0.7}_{-0.9}$. Unlike the case of PSR J1900–0134, our measured PA swing appears to directly sample the inflection point ϕ_0 , however the gentle slope of the swing still leaves significant uncertainty in its position. The best estimate provided by PSRSALSA is that $\phi_0 = 190.4^{\circ+4.6}_{-4.6}$ to within 1σ of uncertainty. Remembering the imposed restriction that $\Delta\phi \geq 0$, this results in $\Delta\phi = 0.5^{\circ+5.7}_{-0.0}$.

Based upon the results shown in Fig. 8, we are able to place some tentative constraints on the geometry of PSR J1945+1211. Based only upon the RVM fit to the PA swing, the impact parameter β can be constrained within approximately $-14^\circ < \beta < 0^\circ$, while the magnetic inclination angle α is essentially unconstrained. However, combining this with limits imposed by our measured W_{open} and $\Delta\phi$ further restricts the parameters to within approximately $-10^\circ < \beta < 0^\circ$ and either $\alpha < 60^\circ$ or $\alpha > 125^\circ$, implying that the rotational and magnetic axes of PSR J1945+1211 are more likely to be aligned than orthogonal. Again with reference to equation (3) in Rookyard et al. (2015), our measured $\Delta\phi$ would imply an upper limit on the emission height of $h_{\text{em}} \lesssim 6100$ km. The uncertainty in the position of ϕ_0 is perhaps the largest limiting factor in further constraining the geometry of this pulsar. Therefore, future observations should focus on improving the S/N of the measured profile, especially through the region of bridging emission, as well as to characterize the profile over a wider bandwidth in order to truly understand the extent of the emission region.

One final note of interest regarding PSR J1945+1211 is that it was frequently seen to display significant variability over very short time-scales, typically from one subintegration to the next. While some of this may be attributable to scintillation, it seems likely that given the pulsar’s long period and the typical 30-s duration of each subintegration, this is simply the result of the pulsar’s intrinsic pulse-to-pulse variability, with each subintegration only including approximately 6–7 pulses. Unfortunately, the single pulses of PSR J1945+1211 largely fall below the threshold of Parkes’ sensitivity, but future dedicated followup by FAST may be able to probe this aspect of PSR J1945+1211’s behaviour.

4.11 PSR J2323+1214

PSR J2323+1214 displays two clear pulse components, however it is unclear as to whether there is any bridging emission linking the two. Although the profile shows moderate L/I , we are unable to detect any clear trend in the PA across the profile. As with PSR J1945+1211, PSR J2323+1214 also shows similar short-time-scale variability. We believe that this is once more a combination of the effects of scintillation with the pulsar’s long period, which only allows for approximately 8 pulses per 30-s subintegration. The single pulses of PSR J2323+1214 also largely fall below the detection threshold of Parkes, and so we once again recommend additional followup by FAST.

5 DISCUSSION

5.1 Detectability in earlier surveys

While these 11 pulsars were discovered through the use of FAST and the significant increase in gain afforded by such a large radio telescope, it is worth considering whether any of them could have been discovered by earlier pulsar surveys. Since we have characterized the behaviour of these pulsars in the 20-cm observing band, we consider here only a set of major pulsar surveys undertaken

at this frequency which have been conducted over approximately the previous two decades, and note that this overview is unlikely to be fully comprehensive. We do not intend this as a review of the capabilities of FAST, since the initial discovery of these pulsars by FAST was at much lower frequencies where their properties have yet to be fully evaluated.

We first consider those surveys undertaken with the Parkes 64-m radio telescope. Both PSRs J1851–0633 and J1900–0134 fall within the sky region of the Parkes Multibeam Pulsar Survey (PMPS, Manchester et al. 2001), for which the average limiting flux density is approximately 0.22 mJy. We then adjust this value to account for both the narrow pulse widths of these pulsars and the specific sky temperature¹⁷ at each position (which Manchester et al. 2001 did not take into account). However, even after these corrections, the flux densities of both pulsars appear to fall below the detectable threshold of the PMPS. Therefore, it is unsurprising that neither of these pulsars were previously discovered by the PMPS.

PSR J0803–0942 lies within the boundaries of the Parkes High-Latitude pulsar survey (PKSHL; Burgay et al. 2006). For a pulsar with a duty cycle of 1 per cent (comparable with 1.4 per cent for PSR J0803–0942) and located at the centre of the central beam of the MB20 receiver, Burgay et al. (2006) reports a limiting flux density of ~ 0.2 mJy. This is already a factor of 2 larger than the measured flux density of PSR J0803–0942, and so the non-detection of this pulsar in PKSHL is also to have been expected.

Considering the modern generation of Parkes MB20 pulsar surveys, we next turn to the HTRU-S survey (Keith et al. 2010). The only pulsar to fall within either the HTRU-S LowLat or HTRU-S MedLat sky regions was PSR J1851–0633, which was previously detected by the HTRU-S LowLat survey and represents a shared discovery. Meanwhile, all but three of our reported pulsars (namely PSRs J1919+2621, J1945+1211, and J2323+1214) fall within the HTRU-S High Latitude survey (HTRU-S HiLat; Keith et al. 2010), which has a limiting flux density of approximately 0.27 mJy. The only pulsar within the HTRU-S HiLat region with a flux density above this value is PSR J1926–0652. However, given the reported nulling behaviour of this pulsar (Zhang et al. 2019) and the fact that each HiLat observation is only 4.5 min long, it is unsurprising that this pulsar eluded detection in this earlier survey, as it may easily have been observed during its ‘off’ state.

One additional modern pulsar survey undertaken at Parkes has been the Survey for Pulsars and Extragalactic Radio Bursts (SUPERB; Keane et al. 2018). In many ways, SUPERB represents a more-sensitive successor to HTRU-S HiLat, surveying much of the same region of sky but with just over double the integration length, bringing down its limiting flux density to approximately 0.15 mJy. Five of our reported pulsars (PSRs J0803–0942, J1851–0633, J1900–0134, J1926–0652 and J1931–0144) fall within the SUPERB region, with three of these (PSRs J1900–0134, J1926–0652, and J1931–0144) having flux densities above the SUPERB flux density limit. For each of these three pulsars, we retrieved all SUPERB data publicly available via the ATNF Pulsar Data Access Portal¹⁸ which was within 7 arcmin of their timed positions, and folded each observation according to the ephemerides in Tables 2–4. Only PSR J1931–0144 was detectable, but at a typical folded S/N between 7 and 7.5, well below the SUPERB detection threshold.

¹⁷Derived from Remazeilles et al. (2015).

¹⁸<https://data.csiro.au/dap/public/atnf/pulsarSearch.zul>

Lastly, we consider major L -band surveys undertaken by radio telescopes other than Parkes. One such survey is the Arecibo L -band Feed Array pulsar survey (Cordes et al. 2006), which was undertaken with the 300-m Arecibo telescope in Puerto Rico. This survey observed a region of the Galactic plane between declinations of $-1^\circ < \delta < +38^\circ$ and Galactic latitudes of $|l| < 5^\circ$, which unfortunately¹⁹ excludes all pulsars reported in this paper, and so we make no further comment. Finally, Effelsberg has also been conducting the HTRU-North survey (HTRU-N; Barr et al. 2013), a northern counterpart to the HTRU-S survey. As an all-sky survey covering declinations of $\delta > -20^\circ$, the HTRU-N region includes all 11 pulsars reported here, and is theoretically sensitive enough to have detected approximately half of them with a standard periodicity search. However, as large portions of the survey remain to be observed and/or searched, it may simply be down to chance that HTRU-N was not able to discover these pulsars prior to their detection by FAST.

5.2 Non-detections of remaining candidates

We note that Parkes was unable to confirm 14 pulsar candidates from FAST despite having observed them, often multiple times. However, at this stage we can not draw any conclusions regarding the validity of the candidates based upon these non-detections. This is due to the large number of potential contributing factors, which are neither easily separable nor easily quantifiable. Among others, these factors include:

(i) *Scintillation*: the effects of interstellar scintillation are typically more pronounced for narrow-bandwidth observations at lower values of DM (see e.g. Sutton 1971; Backer 1975). Of the 28 FAST candidates in the Parkes sky, 24 have DMs less than $100 \text{ cm}^{-3} \text{ pc}$, and 13 have DMs less than $50 \text{ cm}^{-3} \text{ pc}$. Therefore, it is likely that scintillation may have played a role in the non-detection of a number of these pulsars.

(ii) *Spectral index*: the flux density of pulsars typically decreases as observing frequency increases, with most pulsars displaying steep spectral indices (see e.g. Jankowski et al. 2018). As these pulsar candidates were discovered at observing frequencies less than $\sim 800 \text{ MHz}$, this significantly increases the difficulty of confirming them with both the $\sim 1.4 \text{ GHz}$ MB20 receiver and even the UWL, whose observing band starts at $\sim 700 \text{ MHz}$.

(iii) *Sensitivity*: even during its commissioning phase, the gain of FAST during its early pulsar observations was estimated to be 10.1 K Jy^{-1} (Qian et al. 2019), nearly 14 times larger than Parkes' gain of 0.74 K Jy^{-1} . In order to compensate, integration times on Parkes typically need to be larger by often two orders of magnitude. For example, even excluding all other effects listed in this section, a pulsar detected by FAST's wide-band receiver in 60 s with an S/N of 10 would require at least 2500 s of integration time using the MB20 with Parkes. These long observation times also have the potential to bias against the detection of compact binary systems (see e.g. Ng et al. 2015).

(iv) *Positional errors*: due to the fact that FAST was still operating in a commissioning and testing phase, errors in position often resulted during early observations. This was exacerbated by the fact that FAST was operating in a drift-scan mode (as opposed to a tracking mode), and so the on-sky position of the telescope was constantly changing. Observers at Effelsberg determined in at

least one instance that the true position of a confirmed pulsar was separated from its reported candidate position by a significant fraction of a degree, which is likely to have hampered our confirmation efforts (Cruces et al. in preparation).

5.3 Future wide-band analysis

As noted earlier, we have also recorded a significant quantity of wide-band data for each of the 11 pulsars, spanning the full bandwidth of the UWL. We have chosen not to include this data as part of our analysis in this paper for two primary reasons. First, as the UWL is a new instrument and produces significantly larger volumes of data than earlier receivers, we have only recently mastered the data reduction techniques required to efficiently process the full receiver bandwidth. Secondly, as the UWL only came into use part-way through our observing campaign, we wish to collect more data in order to improve the integrated S/N of each pulsar beyond that which was available at the time of publication.

It is already clear that many of the pulsars reported here will benefit from an analysis utilizing the full UWL band. For example, it should be possible to further characterize the properties of the scintillation observed in PSR J0021–0909, as well as to make more reliable detections of the pulsar by analysing portions of the band where the pulsar is scintillating up. A wide-band analysis will also be useful in better characterizing the profile structure and emission region of many of these pulsars by indicating how the components and polarization properties change with frequency. Such an analysis will be especially useful in refining our preliminary attempts at modelling the geometry of these pulsars (notably PSRs J1900–0134 and J1945+1211) and may allow for the modelling of additional pulsars (e.g. PSRs J0344–0901 and J1851–0633).

5.4 Lessons for future pulsar surveys

Our experience in using Parkes to follow-up discoveries from FAST has shed light on several topics which are likely to be relevant to the next generation of pulsar surveys to be undertaken by telescopes such as MeerKAT, the Square Kilometre Array (SKA) and future surveys by FAST itself. Particularly in the case of the SKA (see e.g. Keane et al. 2015), much consideration has been given to the problem of efficiently producing well-curated sets of pulsar candidates from increasingly large data volumes. The general consensus has been to move from offline to real-time candidate processing (see e.g. Keane et al. 2018) and from manual, human-driven candidate review to automatic systems based upon machine-learning techniques (for a recent review, see Lyon et al. 2016).

Less discussion is available in the literature on the topic of how these pulsar candidates should be followed up once candidates have been determined, with notable entries including Cordes et al. (2004) and Keane et al. (2015). In the case of just the proposed SKA1-MID, Keane et al. (2015) anticipate the detection of $\sim 10\,000$ pulsars, more than tripling the current number of known pulsars listed in PSRCAT. At this stage, it is unclear how much time will be available on these next-generation telescopes to follow-up each pulsar candidate once their surveys are complete, with optimization strategies already under consideration (e.g. in the case of SKA1-MID, using subarrays to observe multiple fields simultaneously, see Cordes et al. 2004). It is therefore conceivable that many of these surveys will (as per the example of FAST and Parkes) also need to make use of additional, less-sensitive telescopes in order to conduct both candidate confirmation and the long-term timing required to determine phase-connected models of each pulsar's behaviour.

¹⁹Or fortunately, depending on one's perspective.

The challenges in such an endeavour would not be insignificant. As highlighted in Section 5.2, the differences in gain, etc., between current and next-generation telescopes imply that such follow-up observations will require a significantly greater amount of observing time in order to achieve a suitable S/N for each pulsar so as to reliably time the pulsar. This may require additional triaging or prioritizing of pulsar candidates beyond the initial candidate identification process, in order to ensure the most efficient use of resources, most crucially the available observing time across all participating telescopes. For example, brighter candidates may be prioritized for follow-up on a current-generation telescope such as Parkes while fainter candidates may be retained for follow-up by the original telescope. Alternatively, candidates could be prioritized based upon scientific merit, with critical discoveries followed up by the most sensitive telescopes while less remarkable pulsars are passed to less-sensitive telescopes.

The role of next-generation receivers, including phased-array feeds or wide-band receivers, should also be considered when assessing an efficient follow-up strategy. For example, while a telescope such as MeerKAT or FAST may have significantly higher gain at a specific frequency than a telescope such as Parkes, the Parkes UWL receiver may provide an advantage at an alternative frequency where a given pulsar can be more favourably observed (e.g. due to spectral index or interstellar scattering). Similarly, should a small collection of candidates be spatially coincident on the sky, a telescope equipped with a phased-array feed may be able to observe and fold each of these candidates simultaneously, a technique previously demonstrated by Deng et al. (2017).

The problem of candidate follow-up optimization is exacerbated in the case of MSPs and binary pulsars, as explored previously by Keane et al. (2015). These targets typically require a higher cadence in order to determine their orbital and rotational properties. This would have a multiplying effect on the additional resources required to follow-up such pulsars on current generation telescopes. Additionally, as also noted in Section 5.2, the longer integration times may prevent the confirmation of pulsars in sufficiently tight binaries when considering the application of standard acceleration-based search techniques (Ng et al. 2015). This may necessitate that pulsars suspected of being in such a binary system be initially followed up by more sensitive telescopes which can employ shorter integration times, at least until an orbital solution can be determined. Alternatively, confirmations could be made with current generation telescopes through the use of more advanced binary search techniques, such as ‘jerk’ searches (see e.g. Andersen & Ransom 2018; Adámek et al. 2019) or orbital deconvolution techniques.

6 CONCLUSIONS

As a pilot program for the upcoming CRAFTS project, we present here 11 pulsars discovered by the FAST UWB in drift-scan mode. They represent all sources from the FAST UWB sample that can be confirmed and well timed by Parkes. Timing models of each pulsar’s spin properties and detailed evaluation of their emission properties, including flux calibration and polarization properties, are obtained. Their spin periods range from 0.57 to 4.76 s. Their characteristic ages range from 0.65 to 320 Myr. They largely reside in the ‘normal’ pulsar region on the $P-\dot{P}$ diagram.

Many display emission features of significant scientific interest, which warrant ongoing follow-up study. At least two pulsars exhibit particular variability in their pulsations. PSR J0344–0901 shows moding ‘swooshes’, which has only been found in a small, but well-documented class of pulsars. Future study of this pulsar will

benefit greatly from high-sensitivity, single-pulse studies by FAST, as would PSRs J1945+1211 and J2323+1214, which may exhibit their own rich single-pulse behaviour. The other pulsar of note is PSR J1926–0652, which shows a plethora of emission phenomena, including nulling and subpulse drifting, which have been presented as part of an earlier paper (Zhang et al. 2019).

RVM modelling of the emission geometry was carried out as part of this paper for PSRs J1900–0134 and J1945+1211. This is in addition to PSR J1926–0652, which was modelled as part of Zhang et al. (2019). PSR J1900–0134, in particular, can be relatively well constrained to have a pulse width of $W_{\text{open}} = 12.0^{+0.7}_{-0.7}$ and an emission height $h_{\text{em}} \lesssim 880$ km. The PA curves of PSRs J0344–0901, J1851–0633, and J1931–0144 are also promising, although not well modelled by our current analysis. Observations with a much wider bandwidth should better reveal the structure of emission regions as well as their spectral index and scintillation properties.

We close this paper by looking forward to the future of pulsar surveys. Our work here represents a small case study which we hope can be of use in the planning and implementation of the next generation of pulsar surveys on telescopes including MeerKAT, the SKA, and on FAST itself. Rather than the typical discussion surrounding large data volumes and the efficient selection of pulsar candidates, we have demonstrated some of the advantages and challenges associated with following up the pulsar discoveries of one telescope with another which is far less sensitive, a scenario which may repeat itself as the next generation of pulsar surveys gets underway. FAST itself has already commenced observations as part of its CRAFTS survey project, and we can expect the steady production of increasing numbers of new pulsar discoveries from FAST, and their follow-up on Parkes, for many years to come.

ACKNOWLEDGEMENTS

This work is supported by the National Program on Key Research and Development Project no. 2017YFA0402600, CAS Strategic Priority Research Program no. XDB23000000, and by the National Natural Science Foundation of China under grant nos 11690024, 11725313, 11743002, and 11873067. The Parkes Observatory is part of the Australia Telescope National Facility which is funded by the Australian Government for operation as a National Facility managed by the Commonwealth Scientific and Industrial Research Organisation (CSIRO). This work made use of data from the FAST. FAST is a Chinese national megascience facility, built and operated by the National Astronomical Observatories, Chinese Academy of Sciences (NAOC). We appreciate the efforts of all those in the FAST Collaboration for their support and assistance during these observations. The authors wish to thank Lawrence Toomey for his data management assistance, Simon Johnston for his insight into RVM fitting and analysis techniques, and Jacinta Raheb-Mol and Maggie Lockwood for their assistance with data reduction. QZ is supported by the National Natural Science Foundation of China (U1731218) and the Science and Technology Fund of Guizhou Province ((2016)–4008 and (2017)5726–37). ZP is supported by National Natural Science Foundation of China under grant nos 11703047, 11773041, U1631132, and U1831131. Both ZP and YY are supported by the CAS ‘Light of West China’ Program. WZ is supported by the CAS Pioneer Hundred Talents Program. JW is supported by the Youth Innovation Promotion Association of Chinese Academy of Sciences. ADC, LZ, CCM, MY, SW, and JBW carried out most of the observations for this project with the Parkes telescope. MC, DJC and MK supported similar observations with the Effelsberg radio telescope. ADC and GJC processed the

majority of the data sets. The remaining authors provided input on the paper and/or were involved in the discovery and selection of candidates from the original FAST survey.

REFERENCES

- Adámek K., Novotný J., Dimoudi S., Armour W., 2019, preprint ([arXiv:1911.01353](https://arxiv.org/abs/1911.01353))
- Andersen B. C., Ransom S. M., 2018, *ApJ*, 863, L13
- Backer D. C., 1975, *A&A*, 43, 395
- Barr E. D. et al., 2013, *MNRAS*, 435, 2234
- Bhat N. D. R., Cordes J. M., Camilo F., Nice D. J., Lorimer D. R., 2004, *ApJ*, 605, 759
- Blaskiewicz M., Cordes J. M., Wasserman I., 1991, *ApJ*, 370, 643
- Burgay M. et al., 2006, *MNRAS*, 368, 283
- Burgay M. et al., 2019, *MNRAS*, 484, 5791
- Cameron A. D. et al., 2020, *MNRAS*, 493, 1063
- Cordes J. M., Kramer M., Lazio T. J. W., Stappers B. W., Backer D. C., Johnston S., 2004, *New Astron. Rev.*, 48, 1413
- Cordes J. M., Lazio T. J. W., 2002, preprint ([astro-ph/0207156](https://arxiv.org/abs/astro-ph/0207156))
- Cordes J. M. et al., 2006, *ApJ*, 637, 446
- Dai S. et al., 2015, *MNRAS*, 449, 3223
- Deng X. et al., 2017, *PASA*, 34, e026
- Everett J. E., Weisberg J. M., 2001, *ApJ*, 553, 341
- Freire P. C. C., Ridolfi A., 2018, *MNRAS*, 476, 4794
- Hobbs G. B., Edwards R. T., Manchester R. N., 2006, *MNRAS*, 369, 655
- Hobbs G. et al., 2019, *PASA*, 37, e012
- Hotan A. W., van Straten W., Manchester R. N., 2004, *PASA*, 21, 302
- Jankowski F., van Straten W., Keane E. F., Bailes M., Barr E. D., Johnston S., Kerr M., 2018, *MNRAS*, 473, 4436
- Jiang P. et al., 2020, *Res. Astron. Astrophys.*, 20, 064
- Johnston S., Kerr M., 2018, *MNRAS*, 474, 4629
- Johnston S., Kramer M., 2019, *MNRAS*, 490, 4565
- Karastergiou A., Johnston S., 2004, *MNRAS*, 352, 689
- Keane E. et al., 2015, in Bourke T. L., et al., eds, *Advancing Astrophysics with the Square Kilometre Array (ASKA14)*, Dolmann Scott Ltd., p. 40
- Keane E. F. et al., 2018, *MNRAS*, 473, 116
- Keith M. J. et al., 2010, *MNRAS*, 409, 619
- Li D., Dickey J. M., Liu S., 2019, *Res. Astron. Astrophys.*, 19, 016
- Li D., Pan Z., 2016, *Radio Sci.*, 51, 1060
- Li D. et al., 2018, *IEEE Microw. Mag.*, 19, 112
- Lorimer D. R., 2011, *Astrophysics Source Code Library*, record ascl:1107.016
- Lorimer D. R., Kramer M., 2005, *Handbook of Pulsar Astronomy*. Cambridge Univ. Press, Cambridge
- Lyon R. J., Stappers B. W., Cooper S., Brooke J. M., Knowles J. D., 2016, *MNRAS*, 459, 1104
- Manchester R. N., Hobbs G. B., Teoh A., Hobbs M., 2005, *AJ*, 129, 1993
- Manchester R. N. et al., 2001, *MNRAS*, 328, 17
- Manchester R. N. et al., 2013, *PASA*, 30, e017
- Nan R. et al., 2011, *Int. J. Mod. Phys. D*, 20, 989
- Ng C. et al., 2015, *MNRAS*, 450, 2922
- Pan Z. C. et al., 2020, *ApJ*, 892, L6
- Perera B. B. P., Stappers B. W., Weltevrede P., Lyne A. G., Bassa C. G., 2015, *MNRAS*, 446, 1380
- Perera B. B. P., Stappers B. W., Weltevrede P., Lyne A. G., Rankin J. M., 2016, *MNRAS*, 455, 1071
- Qian L. et al., 2019, *Sci. China Phys. Mech. Astron.*, 62, 959508
- Radhakrishnan V., Cooke D. J., 1969, *Astrophys. Lett.*, 3, 225
- Rankin J. M., 1990, *ApJ*, 352, 247
- Rankin J. M., 1993, *ApJ*, 405, 285
- Rankin J. M., Rodriguez C., Wright G. A. E., 2006, *MNRAS*, 370, 673
- Ransom S. M., 2001, PhD thesis, Harvard University
- Remazeilles M., Dickinson C., Banday A. J., Bigot-Sazy M. A., Ghosh T., 2015, *MNRAS*, 451, 4311
- Rookyard S. C., Weltevrede P., Johnston S., 2015, *MNRAS*, 446, 3367
- Staveley-Smith L. et al., 1996, *PASA*, 13, 243
- Strauss R. D. T., 2019, *Nat. Astron.*, 3, 963
- Sutton J. M., 1971, *MNRAS*, 155, 51
- van Straten W., Bailes M., 2011, *PASA*, 28, 1
- van Straten W., Manchester R. N., Johnston S., Reynolds J. E., 2010, *PASA*, 27, 104
- Wahl H. M., Orfeo D. J., Rankin J. M., Weisberg J. M., 2016, *MNRAS*, 461, 3740
- Weltevrede P., 2016, *A&A*, 590, A109
- Xie Y.-W. et al., 2019, *Res. Astron. Astrophys.*, 19, 103
- Yao J. M., Manchester R. N., Wang N., 2017, *ApJ*, 835, 29
- Yu Q. et al., 2019, preprint ([arXiv:1912.12807](https://arxiv.org/abs/1912.12807))
- Zhang L. et al., 2019, *ApJ*, 877, 55

This paper has been typeset from a $\text{\TeX}/\text{\LaTeX}$ file prepared by the author.